

O 300
O 300 D
Active Near-Field Monitors



When developing the O 300 product category, the goal was to achieve the most accurate, uncolored sound, combined with ideally shaped waveguides, in a compact size. Complex computer simulations and extensive listening tests were conducted. The result is unique in its class: an unbeatably neutral and even sound stage. A precise bass response, perfect dispersion pattern, and a stunningly real reproduction with remarkable imaging and depth leave nothing to be desired. The O 300 is available with an analogue input (O 300) or with additional digital inputs (O 300 D).



O 300 / O 300 D Active Studio Monitors

3-way system design

- The most important part of the frequency spectrum is reproduced by a separate midrange driver
- Extremely low-distortion reproduction
- Exceptionally neutral sound stage from 35 Hz to 20 kHz
- No standing waves in the enclosure and no bass driver cone break-up

Unconventional enclosure concept

- Very compact enclosure constructed using ideal materials with excellent self-damping properties
- Structural resonances avoided using LRIM (Low Resonance Integral Molding)
- Very accurate bass reproduction due to sealed enclosure
- Acoustic centers of loudspeaker positioned on one plane
- Homogenous front baffle with no diffraction or acoustical discontinuities
- Wider effective listening area for main monitor when horizontally installed
- Modern-looking design with optional baffle cover/grill
- Extensive accessories allow for a multitude of installation possibilities
- Magnetically shielded for use next to CRT screens

Functional waveguide

- Wide horizontal directivity gives increased freedom of movement along the mixing console
- Narrow vertical directivity reduces the effect of early reflections off the console surface
- Perfect directivity pattern leads to a smooth power response

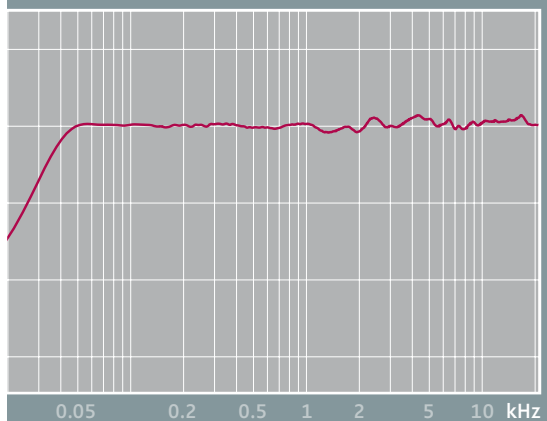
Advanced Electronics

- Integrated electronic limiter for each driver
- Active three-way crossover with 24 dB/oct. slopes
- Transformer balanced input equipped with special distortion reduction crossover function
- Power and overload/limiter-display integrated into the front panel K+H logo
- Controls adapt the monitor's response to compensate for the room location

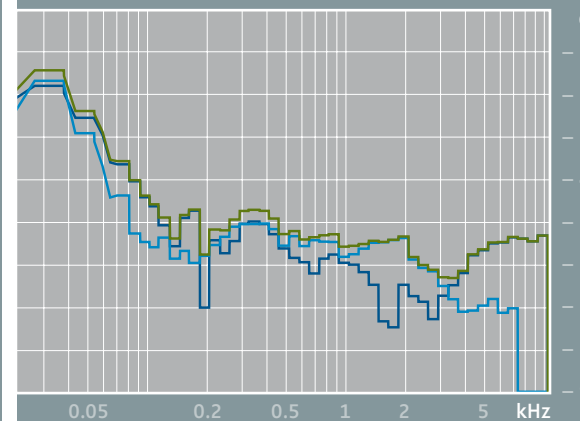
O 300 D

- Additional 24-bit and 32-96 kHz digital input for AES/EBU, AES 3id and S/P-DIF
- Input connector for external Pro C 28 FIR digital controller
- Transformer balanced analog input

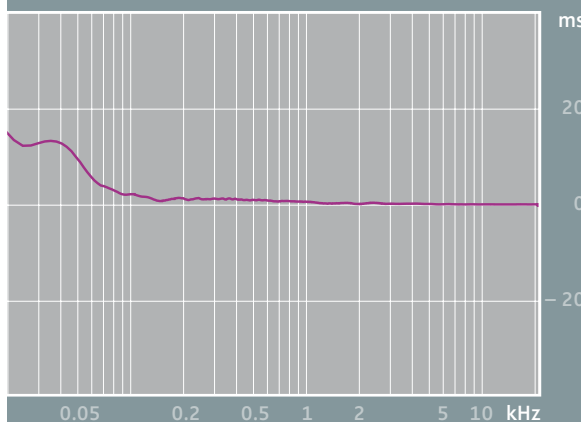
Frequency response



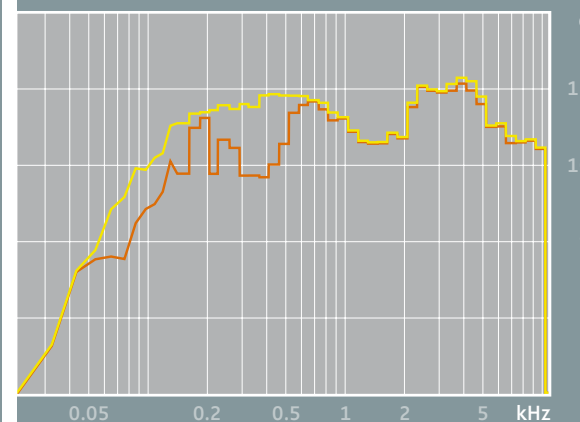
THD at 95 dB SPL at 1 m



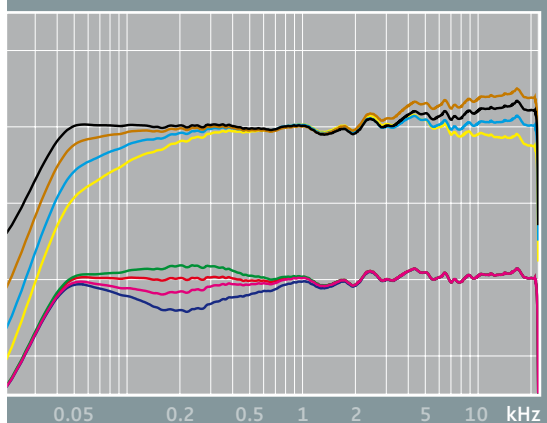
Group delay



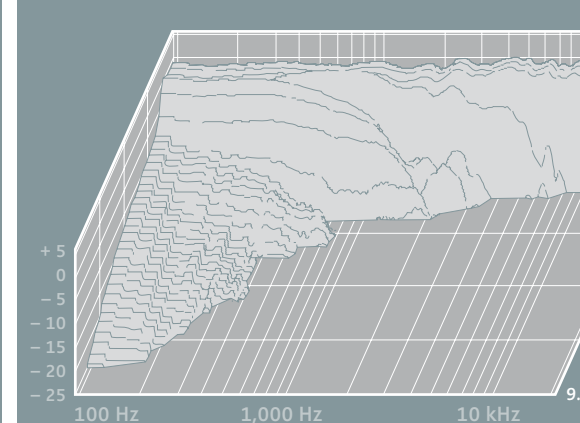
Max. SPL at 1 m at 1% and 3% THD



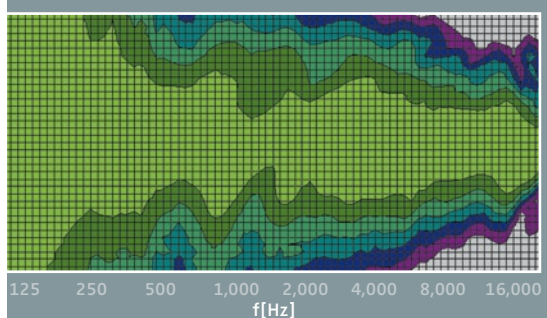
Acoustical controls EQ: bass, mid, high



Cumulative spectral decay



Horizontal directivity



Vertical directivity

